



Hudson Bay Company Seal

Historic Butteville

History Timeline



Oregon Territorial Seal

The three central figures in the establishment of the town of Butteville were Alexis Aubichon, Joseph LaFerte and Francis X. Matthieu, all former employees of the Hudson Bay Company. Aubichon and LaFerte held the Donation Land Claims in which the town was platted.

Matthieu, who held the Donation Land Claim immediately to the south, was named Constable of Champoeg County following the 1843 vote to form a provisional government. He acquired and operated the first grain warehouse in Butteville in 1850, a log and timber building above the river on Butte Street.

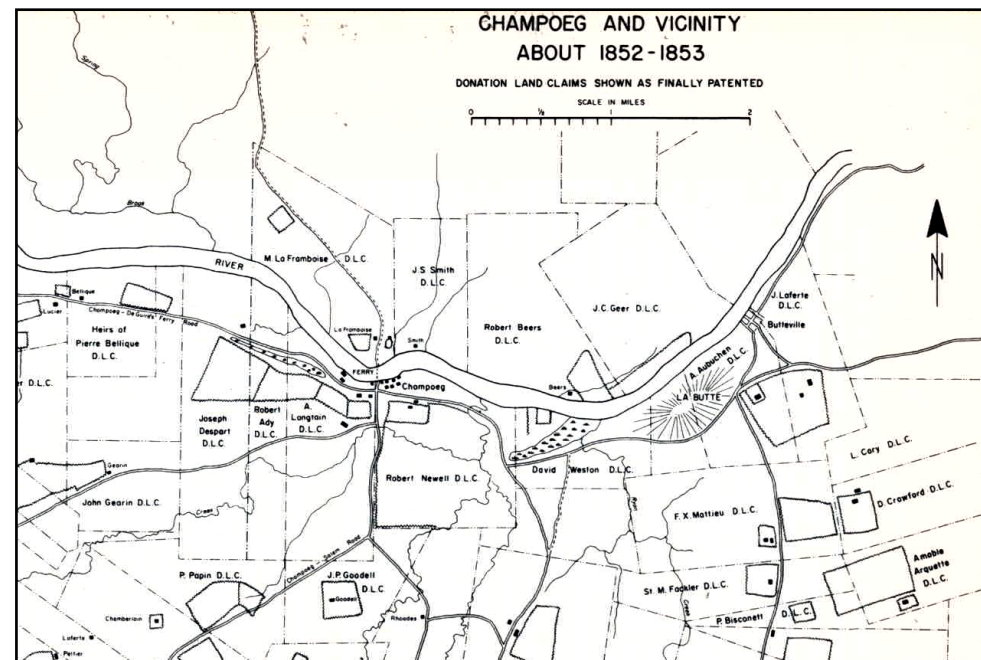
Aubichon's Landing became a major shipping point during the stern-wheeler era, which began in 1851, as seen in this drawing by James Jameson.

In 1856, Matthieu built the first hotel, and later a store where he was the first postmaster.

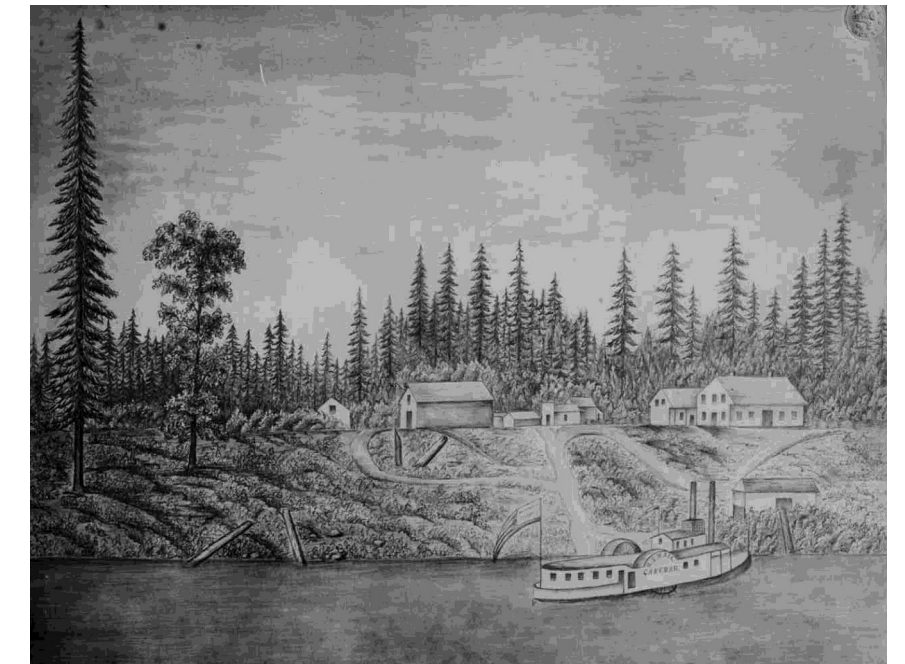
Early History



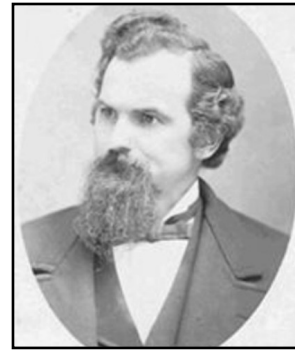
Before the arrival on settlers, the Kalapuya used the natural landing at Butteville for access to the Willamette River



Donation Land Claims in Champoeg and Butteville area in 1852



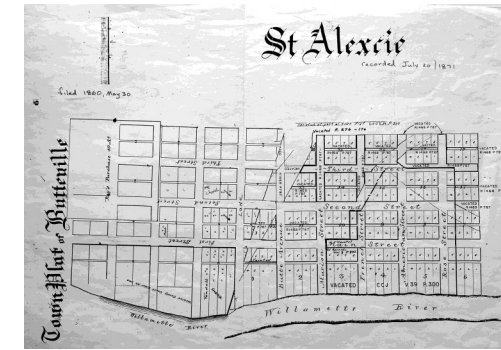
Sketch of Aubichon's Landing by John Jameson, 1852



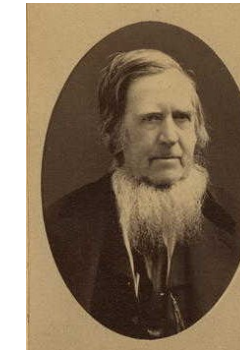
Pierre Mathiot



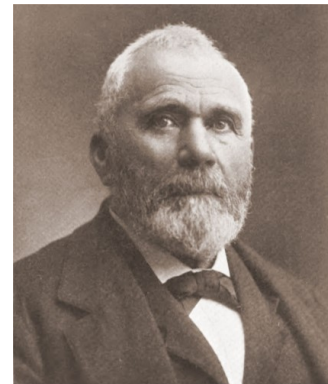
Butteville Cemetery



RV Short plat map—1860



Gustavus A. Cone



Francis X. Matthieu (circa 1900)



Alexis Aubichon home



Wheatland Ferry—1865



Gustavus A. Cone building



First District School

Early Formation

1850

Francis X. Matthieu buys the grainary at Aubichon's Landing which he operates as a trading post, and becomes the first postmaster in Butteville.

1851

The *Canemah* is launched initiating stern-wheeler service on the upper Willamette. The Butteville Ferry begins operations.

1856

F.X. Matthieu builds the first hotel and a store in Butteville.

1857

Francis Feller arrives in Butteville.

1858

Jean Mathiot plants the first vineyard in the Willamette Valley on La Butte

1860

Alexis Aubichon & Joseph LaFerte plat the townsite, with two parts known as St. Alexie and Butteville. Rev. Michael Fackler builds the first church and school.

1861

The 100 Year Flood wipes out the town of Champoeg and damages Butteville, which survives.

1862

Butteville Cemetery Association established with cemetery on Schultz Rd.

1865

Gustavus A. Cone purchase Lot 1 on the corner of Butte & 1st Street and erects a two story building with a store below and a hall above.

1866

The first District School building erected on the corner of Lane & 2nd Street. The Masons and Odd Fellows (IOOF) rent the second story for meetings.

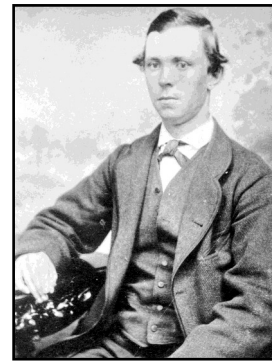
1867

Alexis Aubichon (B. 1787) dies in Butteville and is buried in the St. Paul Roman Catholic Cemetery.





Butteville Landing, 1886



John S Vandaleur II



Josie Ryan Store and Saloon



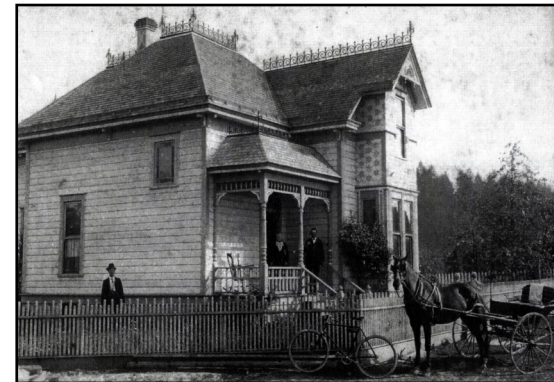
Bar at the Butteville Saloon



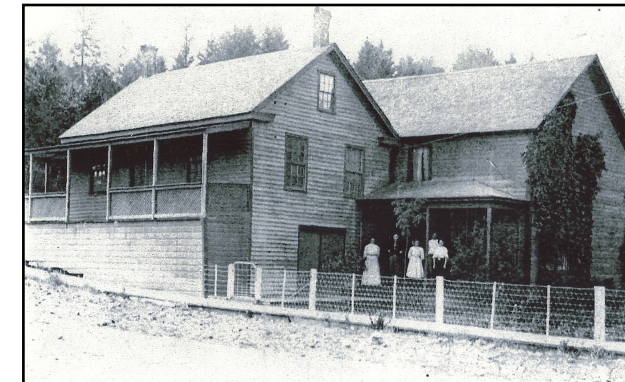
Henry Weinhard



Plat map of Butteville 1878



William R Scheurer home



Butteville Hotel, circa 1900



John Vandeleur home

The Hops Age

1870

Henry Weinhard consolidates brewery ownership in Portland

1876

Henry Fleckenstein purchases Lot 8 on Butte & 2nd Street and opens a store in the house on the property.

1881

Gustavus A. Cone (b. 1798) dies in Butteville. IOOF chapter purchases the Cone building where John Vandeleur operates a store. Francis Feller, Henry Bents and William Iler plant hop crops in French Prairie

1882

Global hop shortage drives prices to \$1 per pound, and an increase in hop production.

1886

William R. Schuerer builds a Victorian style home and a warehouse for hop & grain at the top of Butteville Landing.

1887

JJ Ryan buys Lot 8 on Butte & 2nd Street and expands the store on the property.

1888

George Herren buys the Butteville Hotel and opens a mercantile in the adjoining building.

1889

The Hop Growers Fire Relief Association is formed by Francis Feller, William Iler and Henry Bents in Butteville.

1890

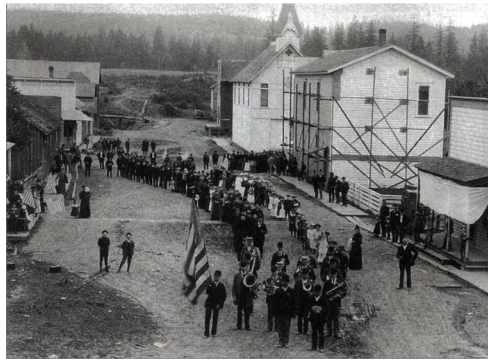
JJ Ryan adds a saloon to his store. Vandeleur house built.

1891

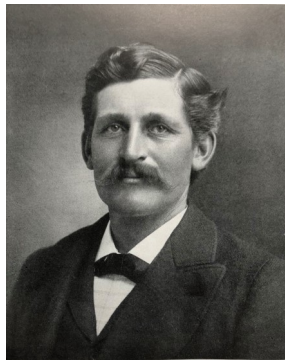
Congregational Church of Christ in Butteville is organized.



1904 Hop Growers Handbook



July 4th Parade, 1895



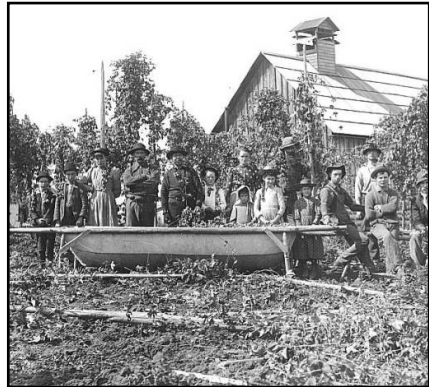
William R. Scheurer



Francis Feller



Sternwheeler at Butteville, 1905



Hop picking 1890



George Herren home



Second District School



Congregational Church 1901



JJ Ryan



JJ Ryan home

End of an Era

1893

Hop labor conflict
forcibly removes
Chinese hop
pickers and ships
them back to
Portland.

1894

Second District
School Building is
erected on Arndt
Road.

1895

George Herren
builds a
Victorian home
along the river.

1900

1900 Census
shows three
hop merchants
in Butteville.

1901

Congregational
Church of Christ in
Butteville dedicated.
JJ Ryan builds home
on Land & 2nd
Street.

1905

Oregon becomes top
hops producing state.
William Scheurer
constructs concrete
footings for
sternwheeler service.
Joseph LaFerte (b.
1813) dies and is buried
at St. Paul.

1907

Arrival of the
Oregon Electric
Railroad in
French
Prairie—the end
of the stern-
wheeler era.

1909

JJ Ryan (born
1851) dies
and buried
in Butteville.

1910

Completion of a
plank sidewalk
to the Butteville
Stop on the
electric railroad
at Arndt Road.

1914

Francis X.
Matthieu (b.
1818) dies and
is buried in the
Butteville
Cemetery.

1917

William E.
Iler (born
1855) dies
and buried
in Butteville

1922

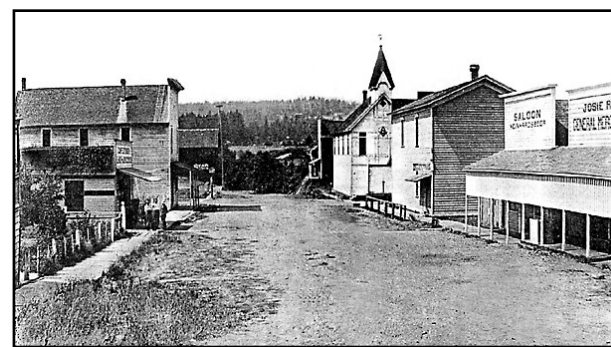
Oregon
becomes top
hops producing
state again;
remains so
until 1943.



Josie Ryan Store Plate



Waterfront at Butteville, 1905



Butte Street (north), 1910



Butteville Hotel burning, 1957



Third District School



Congregational Church



Butteville Store & Cone Bldg 1961



Butteville Store today

Community

1927

Josie Ryan
(born 1880)
dies and buried
in Butteville.

1932

Francis Feller
(born 1840)
dies in
Woodburn,
buried in
Butteville.

1934

Second District
school building
burns down.

1935

Third District
School building
opened. Henry
L. Bents (b.
1860) dies in
Newberg.

1943

Vandeleur
home
purchased
and restored
by Chester &
Karla Harper.

1946

Congregational
Church building
burns down on
Mother's Day.

1948

Second
Congregational
Church
building
dedicated.

1957

Butteville Hotel
burns down.
Butteville jail and
first school
building moved
to Newell Pioneer
Museum

1959

District School
building sold
after
consolidation
into North
Marion School
District.

1962

IOOF building
demolished after
Columbus Day
wind storm.
Grant & Viola Hill
buy Lots 1 & 8 to
create the
Butteville Store.

1999

Sydney Ann
Springer donates
the Butteville
Store property
to OPRD.



1960 Calendar